

da Vinci Jr. 1.0 w

Open Filament Project



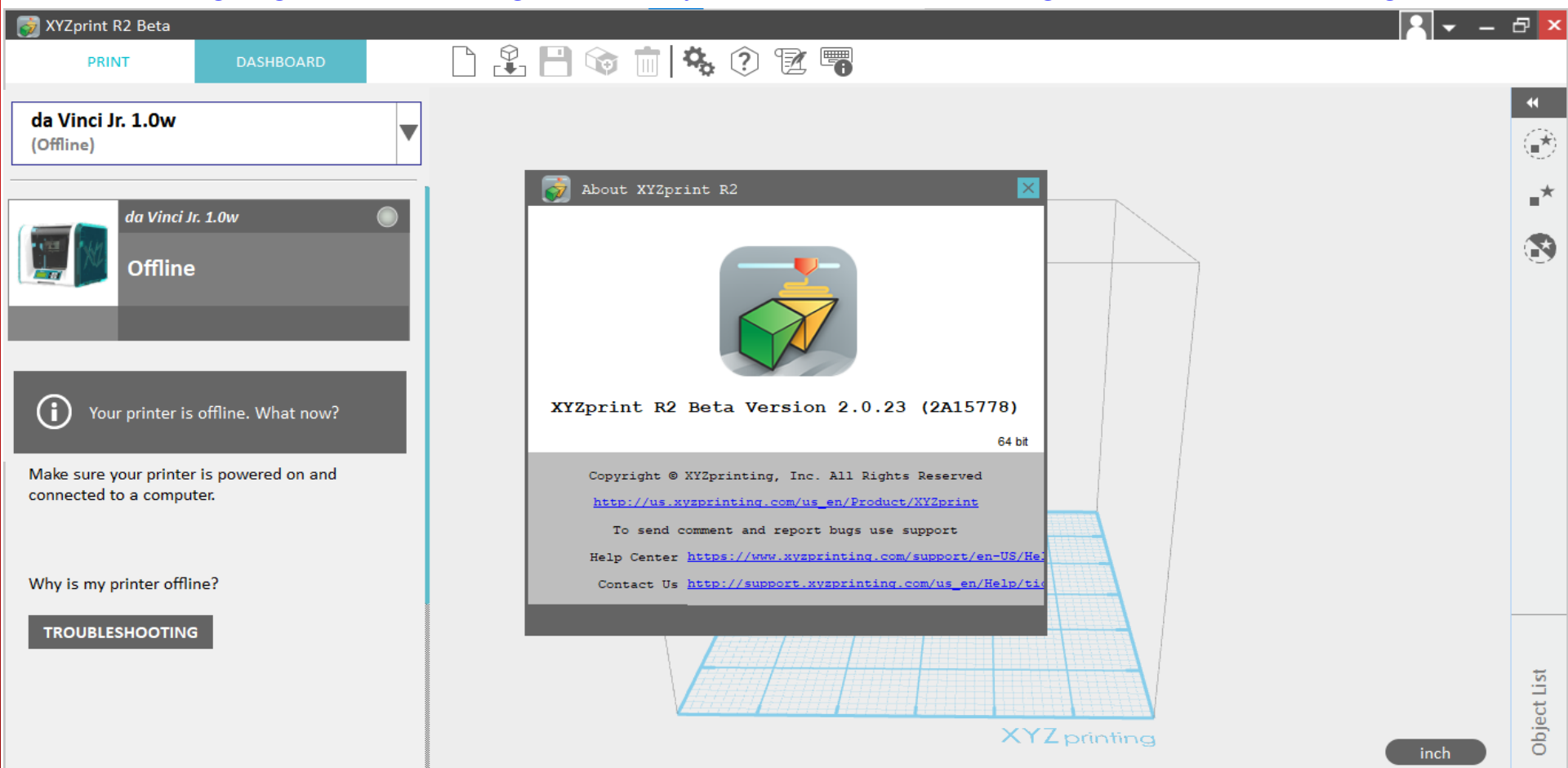
XYZ PRINTING

Step1 Software Installation : XYZprint R2 Beta 2.0.23

XYZprint R2 Beta 2.0.23 :

Donload link:

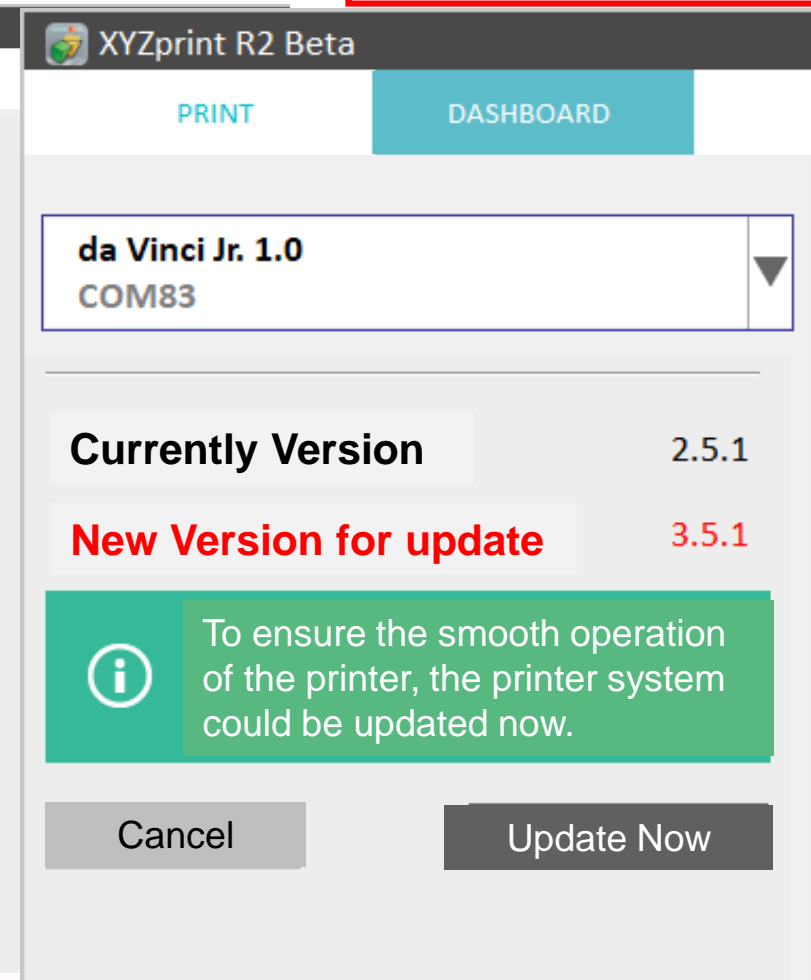
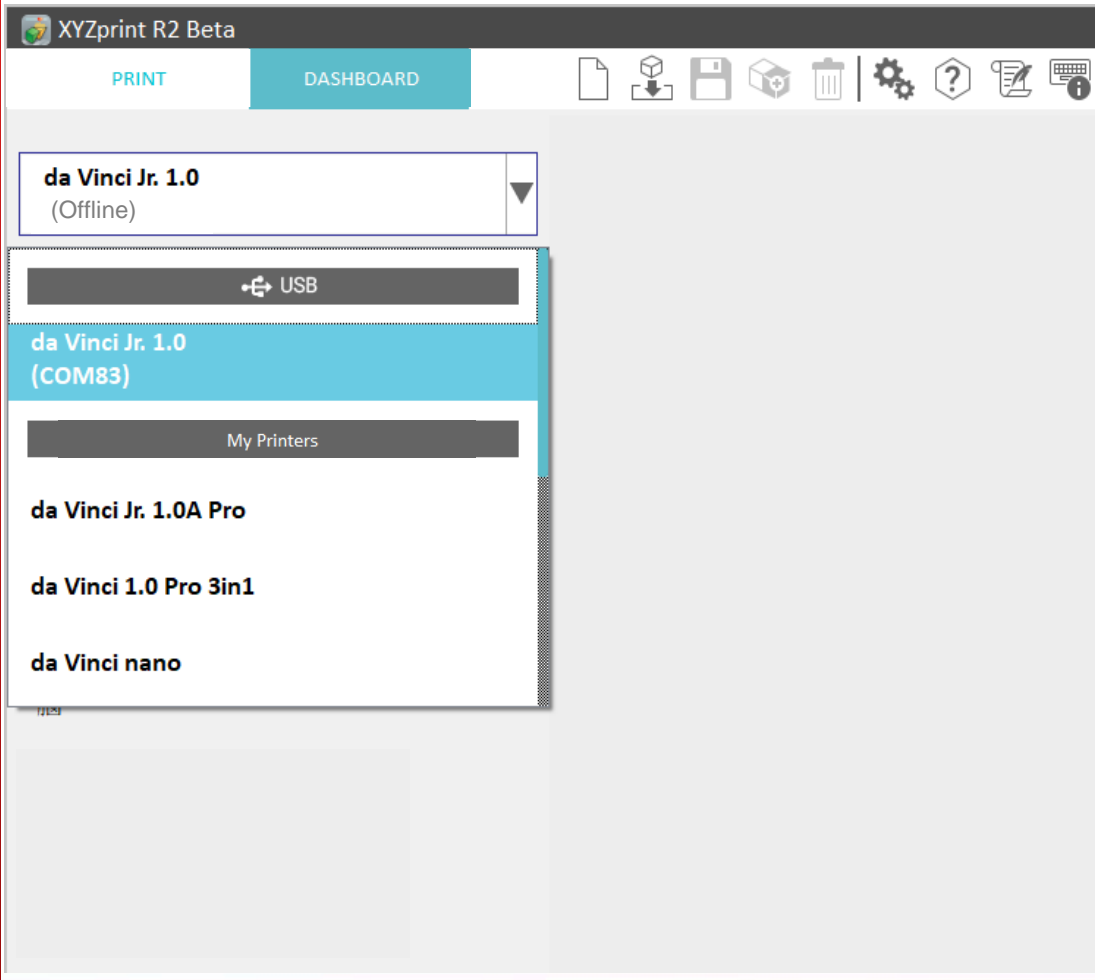
<https://drive.google.com/file/d/1gkGi8caiwpy1JHkeMBFeuvQse9-qSgwM/view?usp=sharing>



Step2 Upgrade firmware

Launch the software and upgrade the firmware to **3.5.1** version.
After the update is completed, the printer will automatically reboot.
*Update time is about 5~10 minutes, please wait patiently.

* Notice
Check does the machine automatically restart when the FW upgrade done.

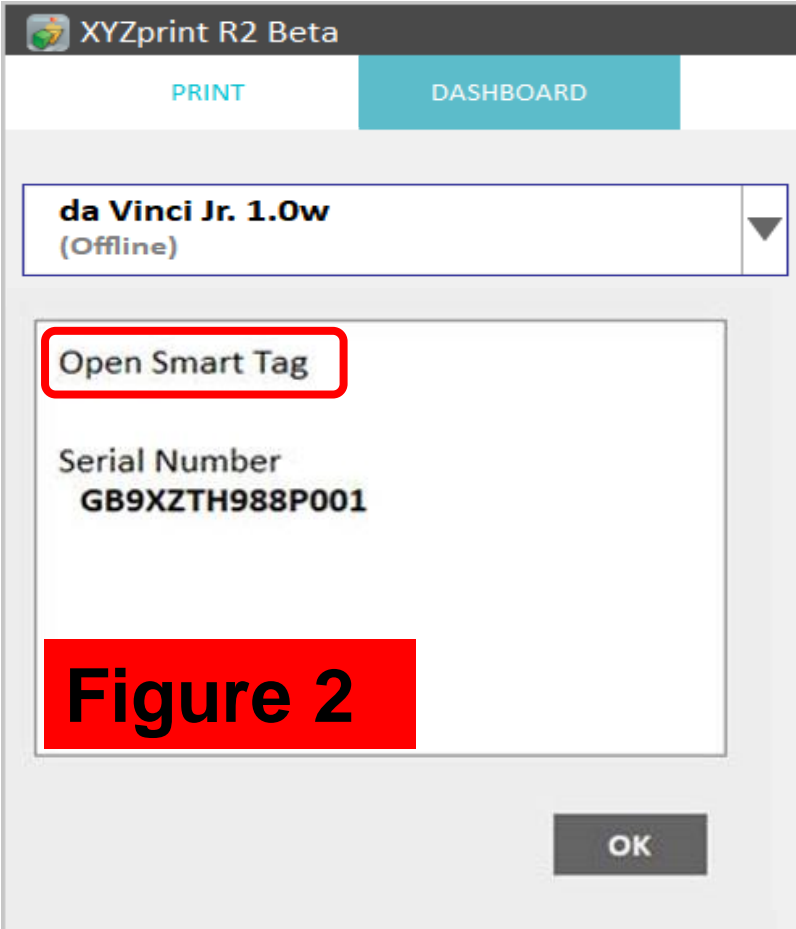
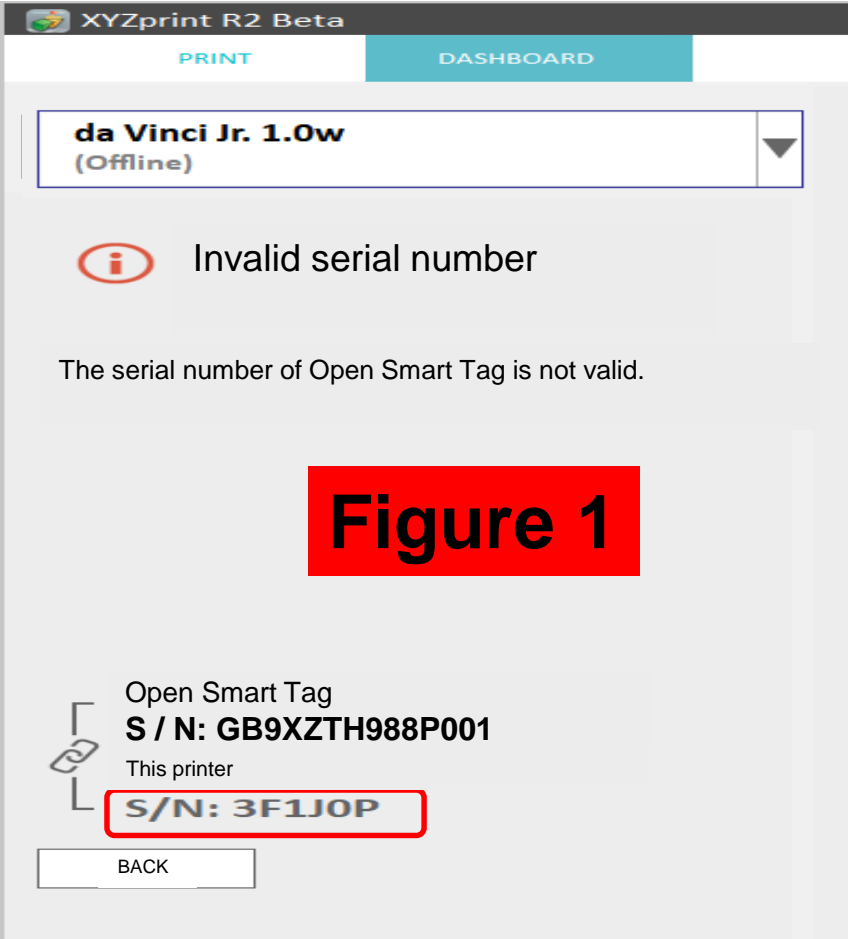


Step3 Filament Chip Confirm

Click the "Filament" in Dashboard and confirm printer serial number is complete in total of 18 digits.

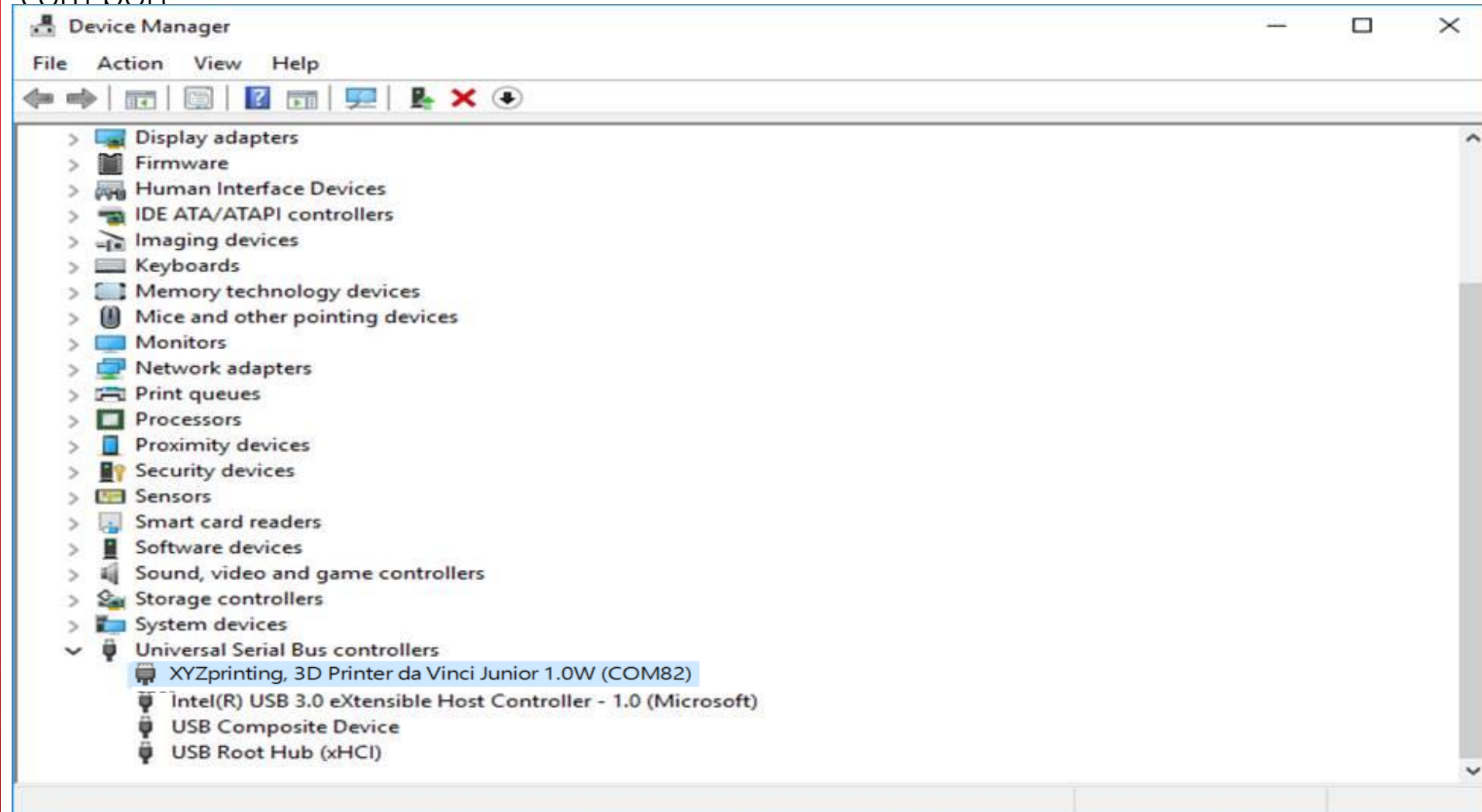
If the status as **Figure 1**, proceed to Step 4 to serial number upgrade tool.

If the status is shown in **Figure 2**, it's done and you could start using 3rd party filament.

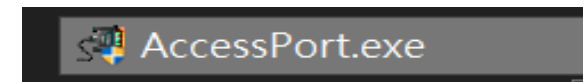


Step4 Com port Confirmed

After connecting the computer to the printer, check the device manger to confirm the com port



Step5 Execute Access Port program

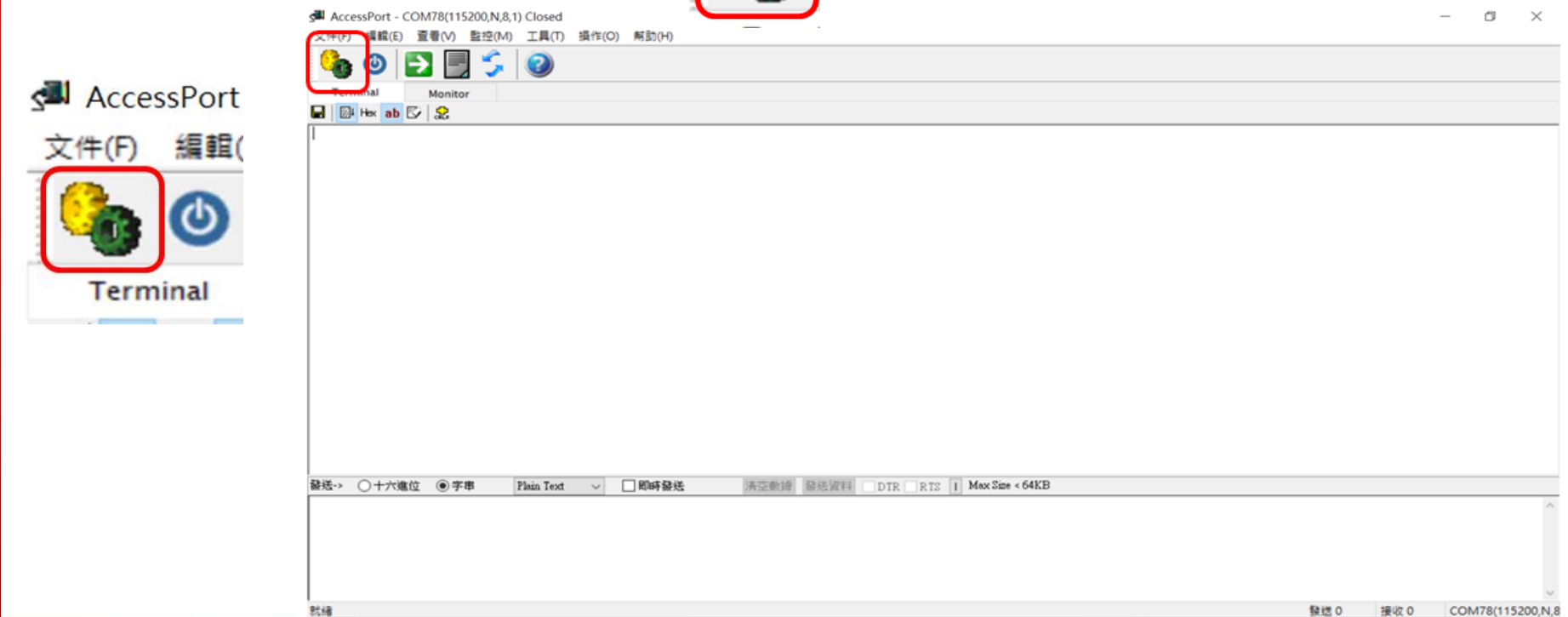


Launch Access Port then input the Command "DJRSSN_#####_19725235_70183947@"
Download link:

https://drive.google.com/drive/folders/1SK677fprQJ9sdavbpFnb_D3FMU02NfZo?usp=drive_link

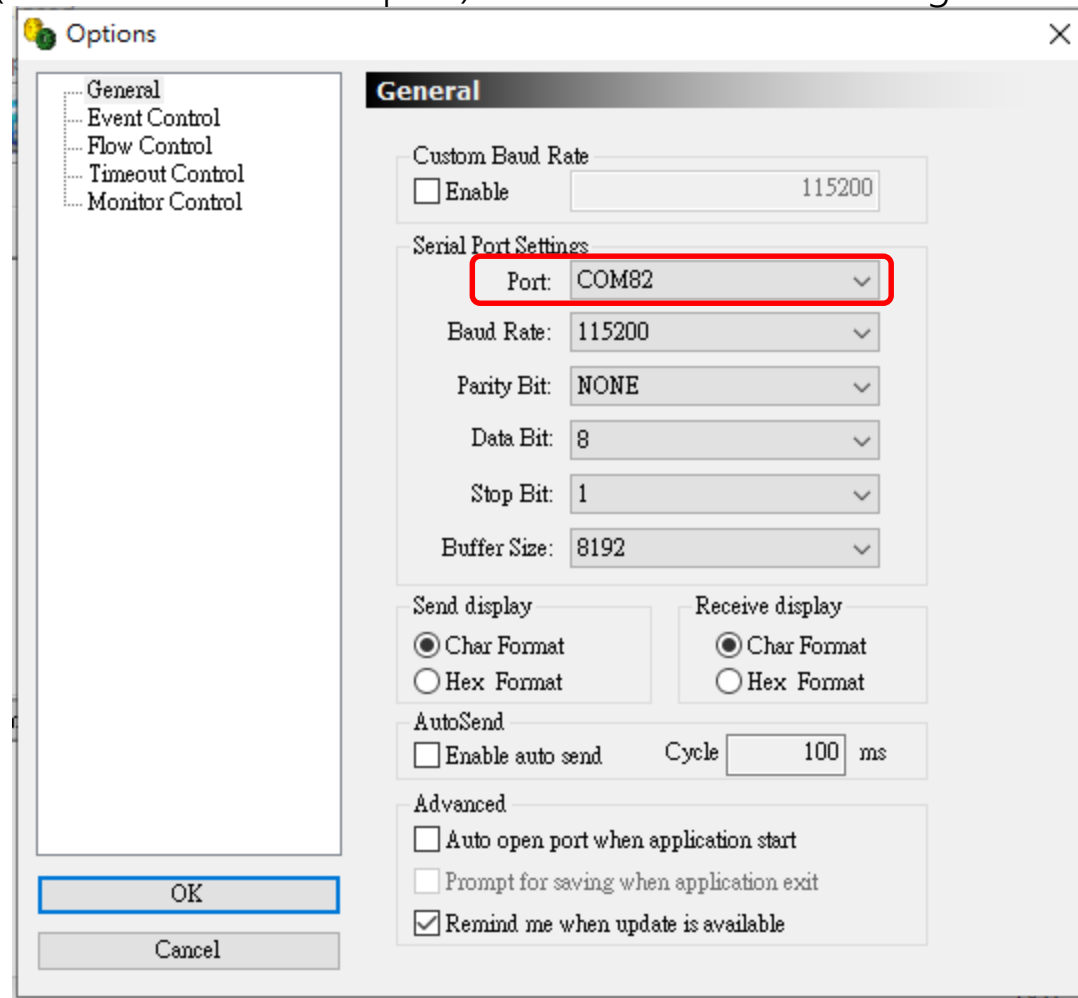
Access Port instruction - Please confirm does any other program using the Printer com port first, close that program if it does.

1. Execute Access Port , Choose "Setup" as  icon.



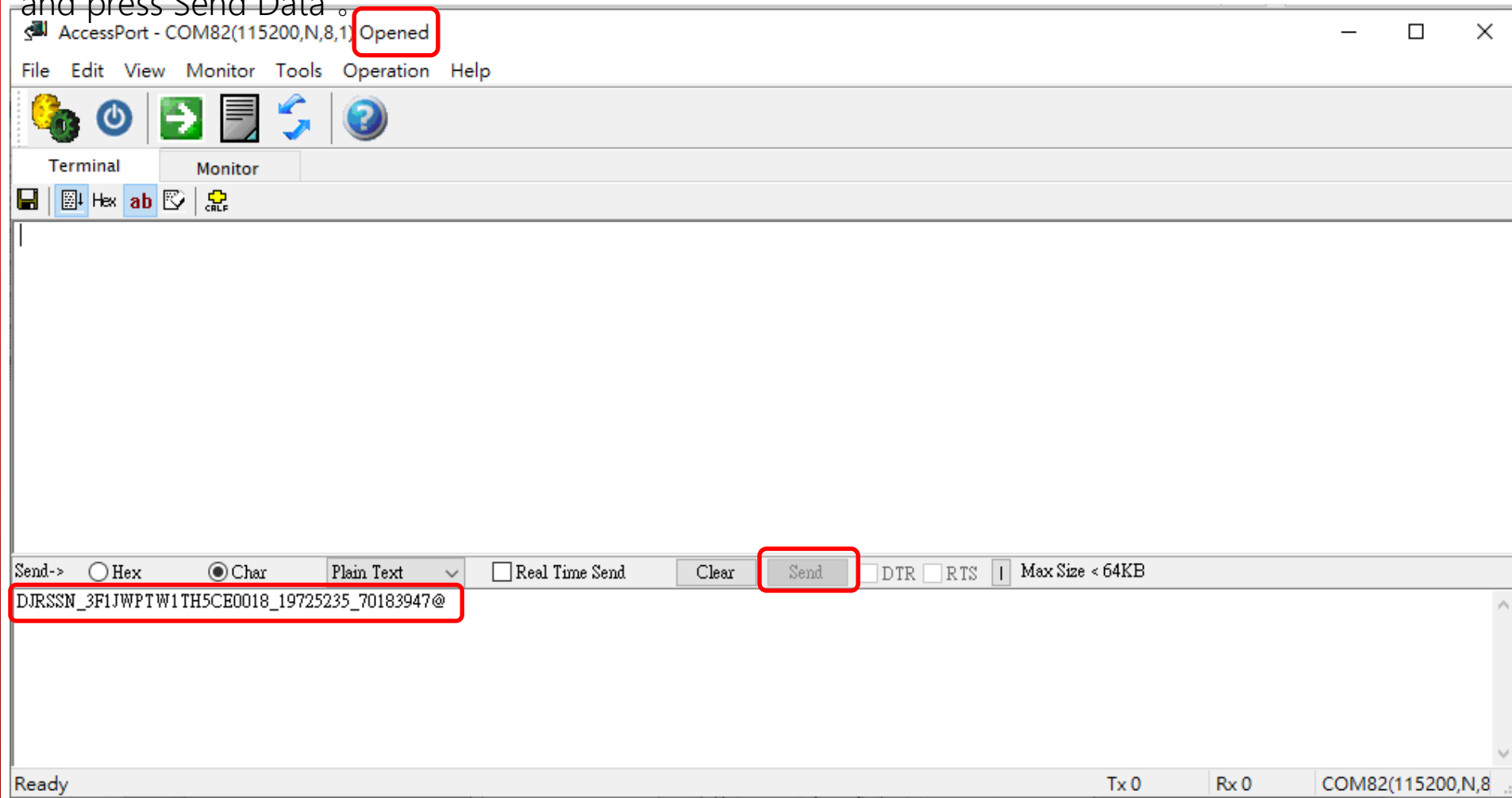
Step6 Launch Access Port Program

2. Choose Comport (The XYZ Printer comport) and click OK after setting.



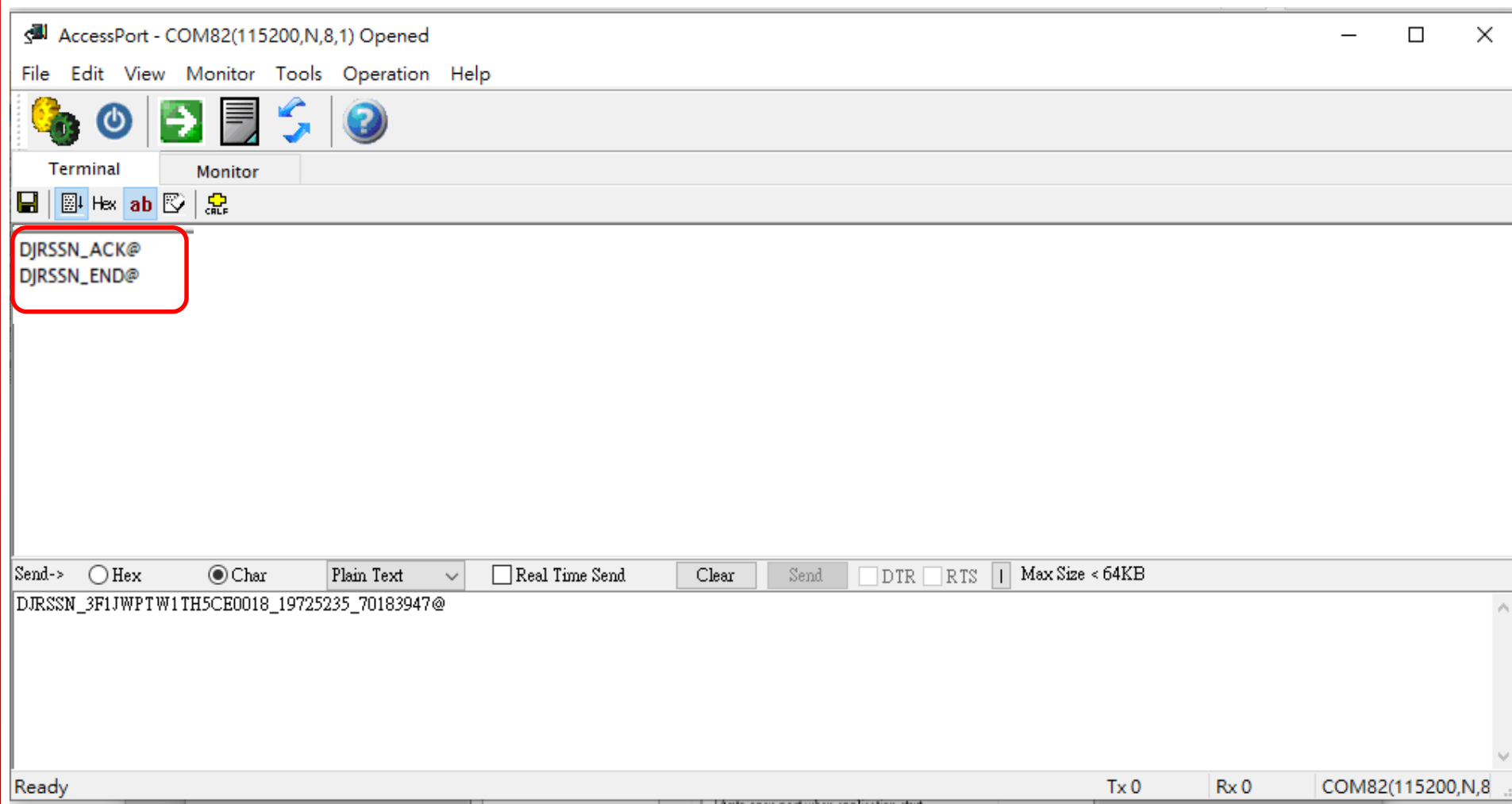
Step7 Command Execution.

3. Check the COM port connection is completed and shows Opened , then you can start sending the command DJRSSN_#####_19725235_70183947@. ##### = The serial number is a total of 18 digits, and press Send Data .



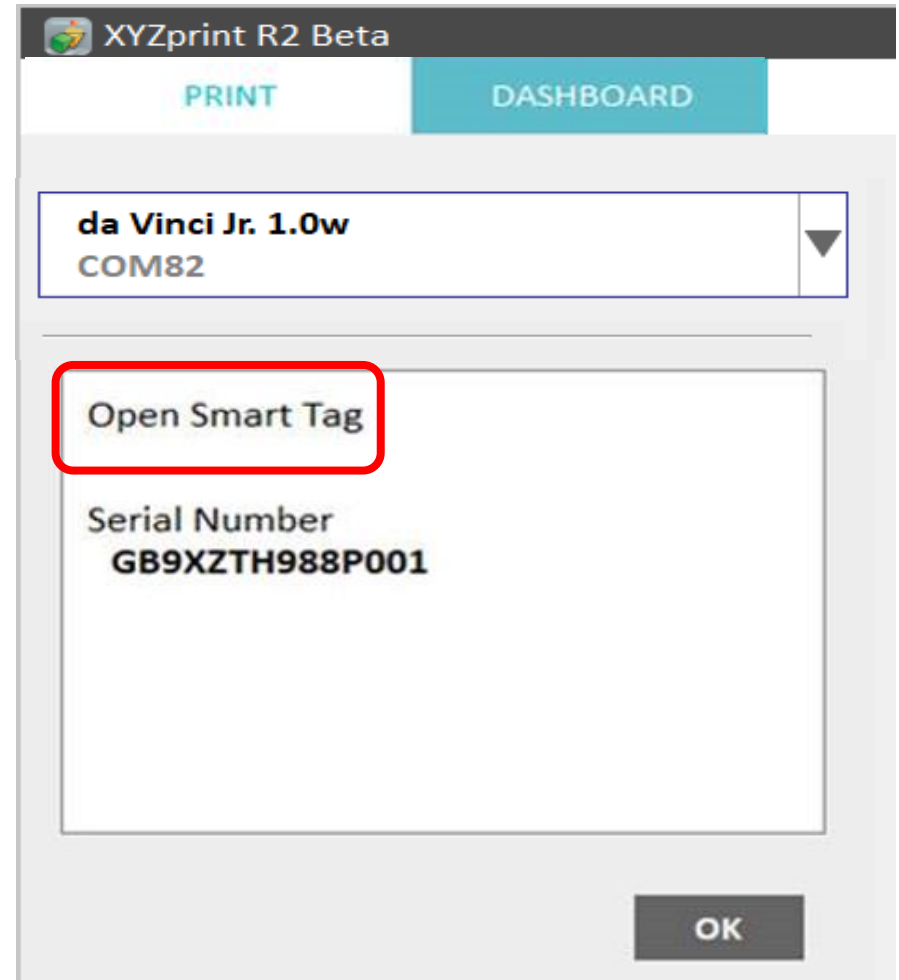
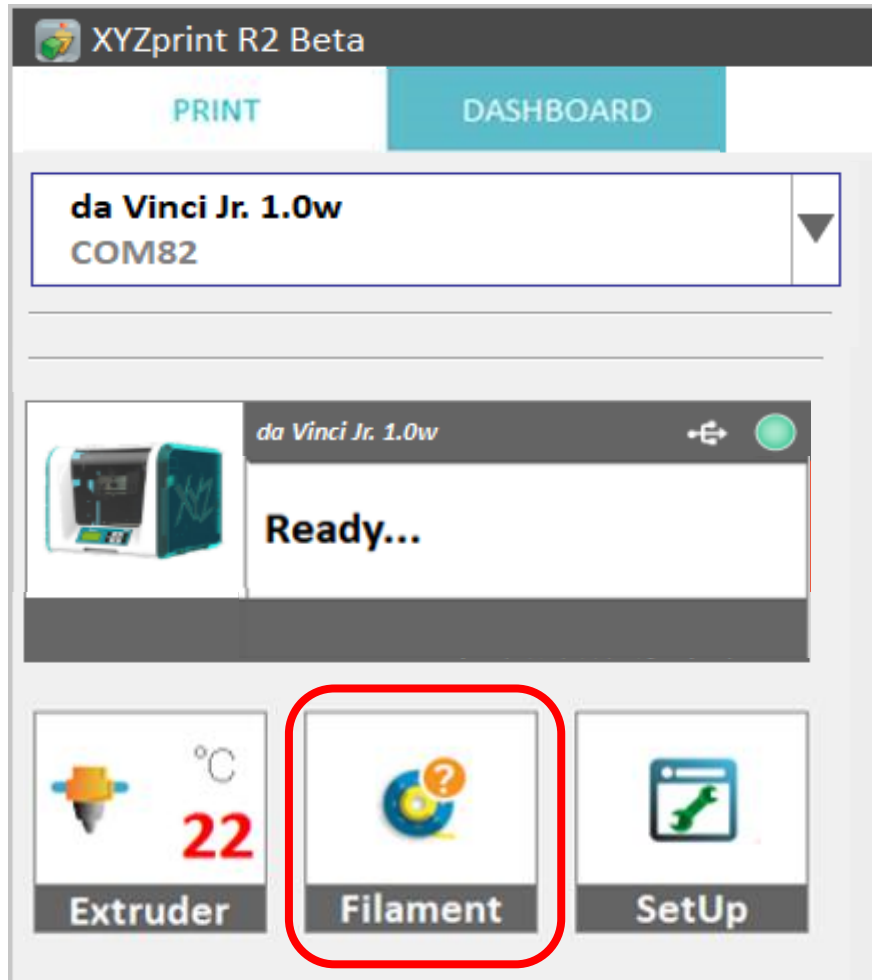
Step8 Confirm command execution reply result.

4. 發送資料後，確認回覆狀態。



Step9 Filament Status Confirm

Click "Filament" and confirm that the status is "Open Smart Tag"



THANK YOU

The background is a solid red color. Overlaid on this are several large, dark red, curved shapes that sweep across the frame from the bottom left towards the top right. These shapes are layered, creating a sense of depth and movement. The overall aesthetic is modern and minimalist.